

**ACCOR HOTELS**  
Feel Welcome

**Mercure**  
HOTELS

# MERCURE BEDDING SOLUTION

October 2018

# CONTEXT

- Current referencing is out of date.
- Products do not fit guests comfort expectations.
- Mercure hotels network is equipped with heterogeneous bedding solutions.

## NECESSITY TO RENEW MERCURE BEDDING SOLUTION



- More international solution.
- More quality and comfort.
- More customisable product.
- Still a competitive cost.



## IN THIS PRESENTATION YOU WILL FIND THE MINIMUM REQUIREMENTS FOR THE MERCURE BED STANDARDS.

- The purpose of this presentation is to ensure consistency throughout the Mercure network & ensure that minimum standards are adhered to. The products have been specifically chosen to improve the overall customer sleep experience.
- Preferential rates have already been agreed, please check directly with the supplier.
- It is very important that you ensure the correct size of duvet is used on each bed size. e.g. double bed will need a king size duvet, not a double duvet.





## NEW BEDDING SOLUTION

### A NEW MERCURE MANDATORY IDENTIFIER

1. For all Mercure hotels openings.
2. For all Mercure room renovations.
3. For all Mercure bedding renewals.





# NEW BEDDING SOLUTION

## COMFORT, INDEPENDENT SUPPORT & CUSTOMISATION



**Zip off topper**  
Zipped on the mattress length

1


- Incredible comfort & softness
- Complementary removable climatic and soft topper which can be easily replaced in case of damages and dirt
- Provides a long life to the mattress



**Mattress**  
Height: 29cm

2

- Totally independent sleeping comfort
- Personalised and optimal support for of each sleeper



**Flexible slatted open top base**  
Height: 15cm

3

- Strength and flexibility of the slats
- A perfect adhesion between mattress and bed base
- Firm Support

**Stirling upholstered  
base frame**

4

- Aesthetic
- Fit each room decoration

**Customisable bed leg**  
Height: 16cm

5

- Aesthetic
- Fit each room decoration



**CHECK THE BED SHEET SIZE TO  
FIT THE HIGH MATTRESS HEIGHT**

## NEW BEDDING SOLUTION

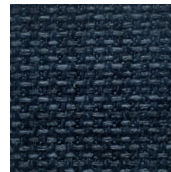
### FOCUS ON CUSTOMISABLE ITEMS

#### STIRLING UPHOLSTERED BED FRAME

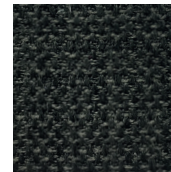
3 available colours - SAMPLES AVAILABLE



- Mercure Grey



- Mercure Blue



- Mercure Brown



#### OPTIONAL LEG DESIGN

3 available colours



- Black round leg



- Natural square leg



- Wenge square leg

SLATS BASE PRODUCT SHEET

MATTRESS PRODUCT SHEET

**3D DECO VISIBLE SLATS BASE 16**

**TECHNICAL SPECIFICATIONS**

- Multiple slats
- Flat and stable
- Longitudinal reinforcement : one support for the base from 90 to 110 cm included, two supports from 122 to 150 cm included and six of 160 cm 3 broader supports
- First choice modular frame with 4 metal angles for base
- 3D grey deco ticking
- Ticking treated according to the effective European FR norms NF EN 527-1 and NF EN 527-2
- Adhesive label on the slats

**CUSTOMERS PROFITS**

- Strength and flexibility of the slats
- A perfect adhesion between mattress and bed base
- Firm support
- Strength and longevity
- Reliability reinforcement and durable product
- Modern and aesthetic
- To ensure the conformity of your hotel to FR norms
- Easy to recognise
- Flexibility and easy to use for the hospitality market

**OPTIONS**

- Tension system by velcro

**3D DECO VISIBLE SLATS BASE 16**

FIRM SUPPORT

"A 16 cm height slats base decorated with a 3D grey deco ticking for a contemporary design and an optimal comfort."

**MERCURE MATTRESS**

**TECHNICAL SPECIFICATIONS**

- Springs unit: pocketed Air Spring® technology springs 522 height : 200 mm
- Elasea 4 cm visco layer lining
- Zip Off Topper attached with wood 200 g/m², polyuretan layer 30 cm 20 kg and cotton wool 200 g/m², dipped on the mattress length
- Perimeteral frame with high-density foam
- Quilted borders
- Ticking BW : 100% polyester
- Smooth face silk UT21 : 50% cotton and 50% polyester
- Ticking treated according to the effective European FR norms NF EN 527-1 and NF EN 527-2
- Label attached on the mattress border

**CUSTOMERS PROFITS**

- Homogeneous and personalised support
- Totally independent sleeping comfort and optimal support for each sleeper
- Gradually absorbs the pressure points while supporting the spine
- Complementary removable linings and soft topper which can be easily replaced in case of damages and dirt
- Provides a long life to the mattress
- Stability, durability and anti-sagging of product
- Gentle and high quality touch
- Hygiene, downy and comfortable touch
- To ensure the conformity of your hotel to FR norms
- Easier to be recognised
- Flexible and easy to be used in the hospitality

**OPTIONS**

- Tension system by velcro

**MERCURE MATTRESS**

"A specific Mercure model with a zip off topper for a complementary soft touch.  
The alliance of two innovative technologies : sleeping independence with Airspring® pocketed springs, and Elvea lining for an exceptional comfort."

## NEW BEDDING SOLUTION DETAILED PRODUCT FACT SHEETS

## AVAILABLE IN FRENCH AND ENGLISH ON MERCURE EXTRANET PLATFORM AND THE INTRANET

# SUPPLIERS

---

## BEDS, BED BASES AND MATTRESSES

### TOP BRASS

Account Manager - John Harrington  
Mobile: 07957815174  
[johnharrington@topbrass.co](mailto:johnharrington@topbrass.co)

## CUSHIONS AND DECORATIVE COUNTERPANE

### CONTESSA CONTRACTS

A division of Top Brass  
Tel: 01429 225278  
[enquiries@contessacontracts.co.uk](mailto:enquiries@contessacontracts.co.uk)



## COMPLEMENT YOUR NEW SOFA OR SOFA BED

---

Add a finishing touch of our scatter cushions made to order in any finish or design, any size or shape! Order directly by contacting [sales@topbrass.co](mailto:sales@topbrass.co)





The logo for Mercure Hotels features a large, stylized, light-colored 'm' in the background. Overlaid on this is the word 'Mercure' in a dark purple, serif font, with the word 'HOTELS' in a smaller, dark purple, sans-serif font directly beneath it.

**mercure.com**  
**747 HOTELS WORLDWIDE**